



# MUROS SISMO

# S35\_4NP\_12NP<sup>®</sup>

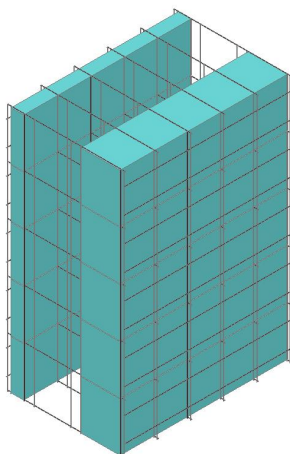


Figura 1: Visualización 3D

### Anchura Total:

- 35 cm

### Peso del Módulo:

- ± 7,849 kg/m<sup>2</sup>

### Espesor del Hormigón:

- 17 cm

### Resistencia al Fuego (cf. test RUG 5208):

- > 140 mins

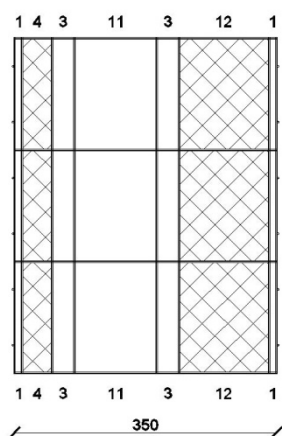


Figura 2: Red 2D

### Montaje:

- 1 x 4 cm Neopor
- 17 cm Hormigón
- 1 x 12 cm Neopor

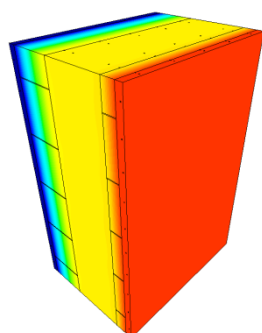
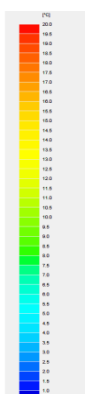


Figura 3: Transferencia Térmica



### Aislamiento :

- $U > 0,175 \text{ W/m}^2\text{K}$